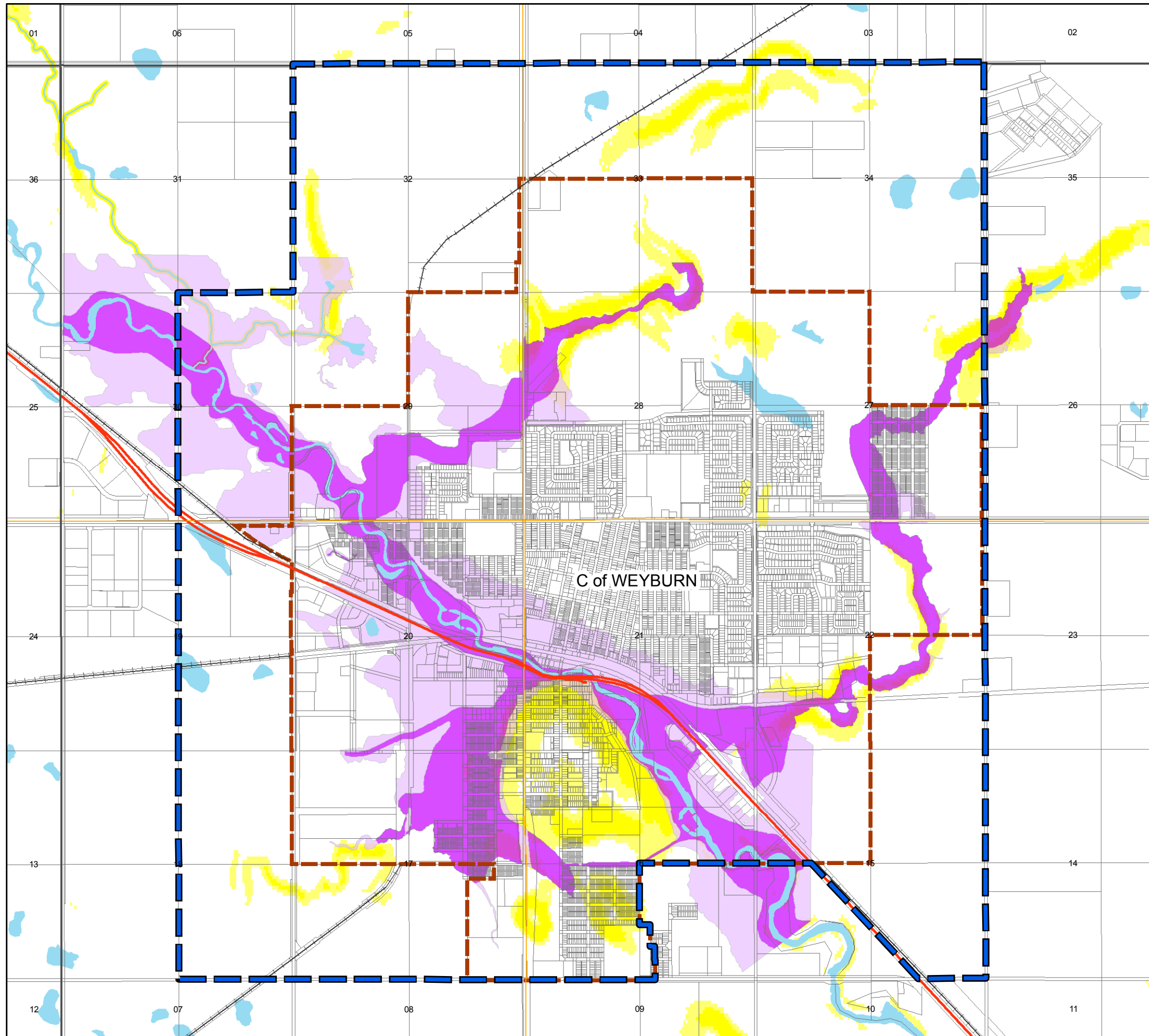
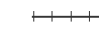








Weyburn Planning District

Map 5a. Environmentally Sensitive Areas



-  Railways
-  Municipal Boundary
-  Waterbody-Drainage
-  Designated Floodway
-  Designated Floodway Fringe
-  Future Growth Study Area
-  Environmentally Sensitive Areas

NAD 1983 CSRS98 UTM Extended Zone 13N
Canadian Spatial Reference System (CSRS) 98

Flood Hazard Map
Land Protection Branch
Ministry of Environment

Flood hazard areas are shown as identified in hydrologic and hydraulic analyses conducted in 1977-79.

